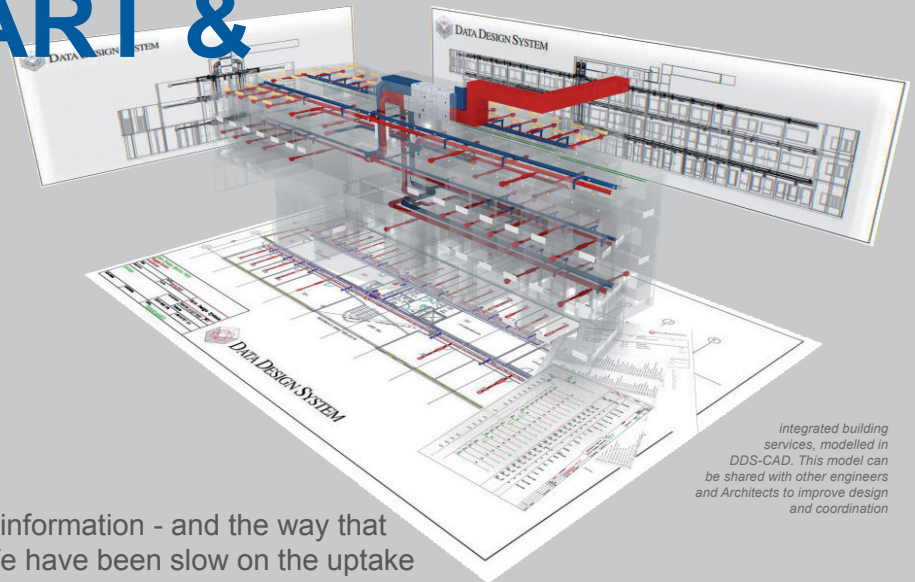


buildingSMART & Engineering

Monday 23 April 2007
5.30 for 6.00 - 8.30pm

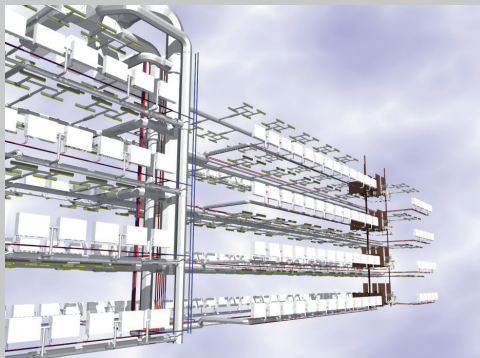
Chatswood RSL Club Ltd
1 Thomas Street & 446 Victoria Avenue
Chatswood 2067



integrated building services, modelled in DDS-CAD. This model can be shared with other engineers and Architects to improve design and coordination

You can't run a project without exchanging information - and the way that you do this is about to be revolutionised. We have been slow on the uptake in Australia, but this is about to change, and if you don't want to be left behind, then you can't afford to miss this important presentation.

The construction industry and the professions are undergoing a change in paradigm in the tools by which they deliver services to their clients; the move from drawings to building information models (BIM). The RAIAs current National Conference for example in Melbourne 20 & 21 April has taken the important step of offering a stream focussed on Integrated Practice - the collaborative opportunity that BIM based design provides.



Clients are starting to ask and require model based solutions. Their interest is dominated by the perceived benefits of better value design, and life-cycle support, ie data for asset and facility management is derived directly from the integrated information in the building model.

- If your client approached you to join a project team using BIM how would you respond?
- Do you know the types of new applications that are available?
- If it's a new paradigm - 2D CAD is only about drawings and documentation - then what are the benefits of these new tools for you?
- How do your current analysis tools exploit/interact with the model based concept?

You know how to share drawings and you also know the well reported limitations of current

documentation (for example see the Queensland Construction Industry Forum report "Getting it Right First Time". In that report, poor use of IT and tools was a major contribution to inadequate documentation.

So how do you share models between all the engineering and architectural disciplines?

That's what IFC has been designed to do!

IFC is an open, neutral BIM exchange protocol that serves the information needs of not only the design or construction phase but also the briefing, operational and asset management phase of project use.

Norway is in the international forefront of adoption of these tools and has a proactive industry and government guiding developments. Key participants in buildingSMART Norge are our three presenters.

The opportunity arises as they will be participating in the RAIAs National Convention in Melbourne. All three are involved in innovative software systems based on the IFC protocol, and are active members of buildingSMART Norge.

To complement the international speakers we have Rush Sipkes of Triple 'M' Mechanical Services, a Sydney based design, installation and maintenance of building services company, who will talk about their integrated duct estimating and fabrication system.

In addition we are planning to have demonstrations of structural applications that have integrated their structural analysis tools with IFC models.

Individuals or practices who would like to save more detailed discussions or demonstration from our Nordic visitors are encouraged to contact them (go to the buildingSMART website) and make appointments while they are in Sydney 23-26th April or Brisbane 16-18th April.

International Speakers



Bjørn Stangeland

The Managing Director of Data Design Systems ASA, which specialises in building services applications.



Janne Aas-Jakobsen

The Business Manager, Building & Construction for EPM Technology As who offer IFC server solutions.



Kjetil Gjesdal

Manager Utilities for Powel Gemini AS who have developed an IFC compliant tool that integrates GIS data with civil works.



Government Architect's Office



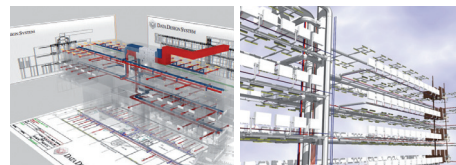
IAI International



www.buildingSMART.org.au

buildingSMART & Engineering Registration

Monday 23 April 2007, 5:30 for 6.00 - 8.30pm
Chatswood RSL Club Ltd



PERSONAL DETAILS

TITLE	FIRSTNAME	LASTNAME	
POSITION	ORGANISATION		
ADDRESS		SUBURB	
SUBURB	STATE	POSTCODE	COUNTRY
PHONE	MOBILE	FAX	EMAIL

CATEGORY OF ORGANISATION

- | | |
|--|--|
| <input type="checkbox"/> Client, Owner, Operator | <input type="checkbox"/> Architect, Engineer, QS, Designer |
| <input type="checkbox"/> Supplier / Manufacturer | <input type="checkbox"/> Facilities / Project Manager |
| <input type="checkbox"/> Software Developer / Vendor | <input type="checkbox"/> Telecommunication / Network Service |
| <input type="checkbox"/> Standards / Codes / Certifier | <input type="checkbox"/> General / Specialist Contractor |

PAYMENT METHOD [IAI members* and students - \$15 (incl GST), others - \$25 (incl GST)]

- Visa Mastercard Diners Amex

Please complete the following. (block capitals)

CARDHOLDER'S NAME (IN FULL)	\$ _____ AMOUNT
CARD NUMBER	_____/_____ EXPIRY DATE
SIGNATURE	_____/_____/2006 DATE

* Members of CIBSE, SBSE, SFS, ASHRAE, AIRAH, ACEA EA, RICS, CIOB, AREMA, RACCA, ARWA and AMCA are eligible for the members' rate.

Please fax this form to:

Jane Towndrow

tel +61 (2) 9337 1866

fax +61 (2) 9337 2866

email nsw@cibse.org.au