

# Leveraging Interoperable Identification for openBIM

BuildingSMART Xchange 2024

---

Bonnie Ryan – General Manager Industry Engagement  
4 July 2024



# GS1 is a global data standards and services organisation

Neutral and  
not-for-profit

Member driven  
and governed

Global  
and local 150  
countries

Inclusive and  
collaborative

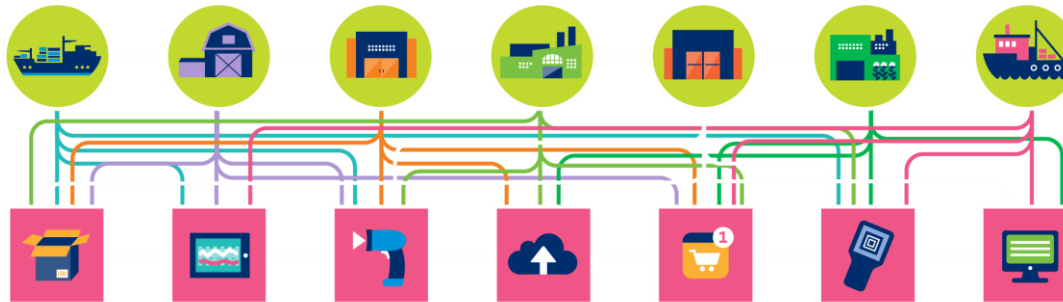


We enable visibility by the exchange of ***authentic data*** through the digital ***identification, capture & sharing*** of information about physical objects

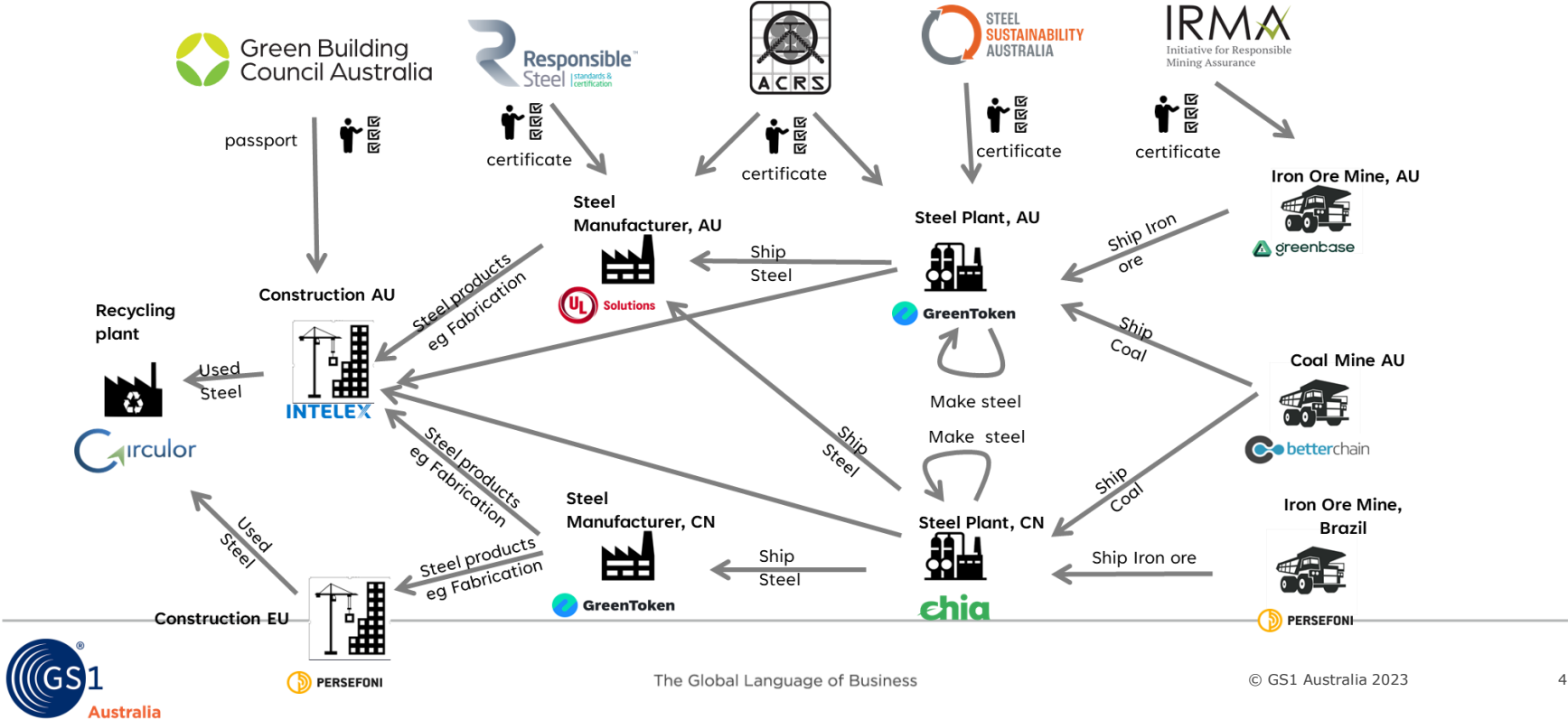
# Traceability in a nutshell

## The ability to trace the history, application or location of an object [ISO 9001:2015]

- Origin of materials and parts
- Processing history
- Distribution & location of the product/service after delivery



# The real world is complex



# Interoperable technology eco-system

---

**For traceability to be effective, systems MUST be interoperable**



EDUCATION



STANDARDS



COLLABORATION

**Traceability solutions based upon proprietary identification methods cannot deliver interoperability between ecosystems.**

---

# Product journey throughout the E2E Lifecycle

In the age of ESG and a more informed client base, the "End to End" journey starts with "DIGITAL PRODUCT IDENTIFICATION"



Lower Green-House Gas Emissions

The Digital record exactly maps to the physical



Passport 



GTIN: 9504002100016

- Product name
- Product description
- Production date
- Global product classification
- Net content & unit of measure
- Country of origin

**GS1 standards  
give products their  
unique identity**

**Identification + Data =  
Identity**

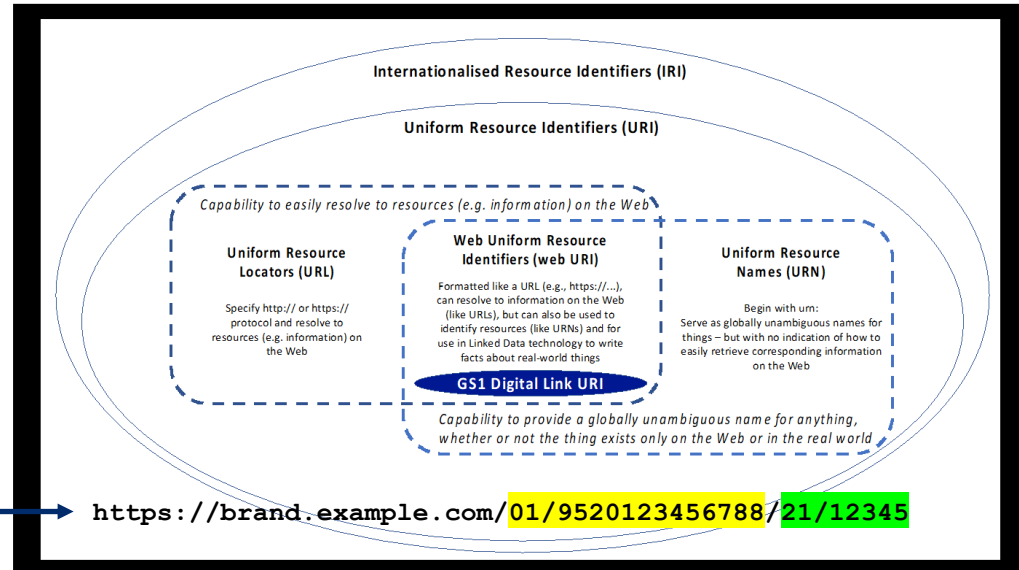




# Digital Link standard: URI Syntax

## Enabling consistent representation of GS1 ID keys with web addresses to link to online information & services

GS1 Digital Link extends the power & flexibility of GS1 identifiers in the real world by making them part of the web – **a gateway to information about the product/material/object**





# What can be achieved via the global language of Business?

---

**GS1 global data standards combined with GS1 Digital Link enables...**

## **“Trusted Product Data Flows”**

**User-defined Access** to a **“GOLDEN THREAD”** of **“Manufacturer VERIFIED PRODUCT INFORMATION”** out in the field, with a simple scan of globally unique tags

Providing end-users with **“Corralled” trusted product data flows** is a critical requirement in the era of “large language models” and “Generative AI.”

# Digital Link – Use Cases

## Product related information can be....

- **IDENTIFIED**
- **CAPTURED**
- **SHARED**

along the entire product lifecycle through a single code, relating to an intelligent Digital Identity in the cloud.



# Single use QR codes don't deliver optimal outcomes

If this in-store application of extra QR codes happened in your local supermarket today...it would be a sub-optimal use of resources, and yet...



Three different product/asset knowledge trails and three times the work plus zero chance of a truly E2E Golden Thread"



# User specific information from a single scan



NorDan Window



	Name	Paul
	Role	Installer

- Install Information for this Nordan Window**
- Digital Product Data (CoBuilder)
  - EUDR (Osapiens)
  - General Design Details
  - Agrément Certificates
  - Handling Instructions (PDF)
  - Health and Safety (PDF)
  - Risk Assessment Methods Statement (RAMS) (PDF)

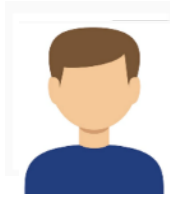
	Name	Jane
	Role	Architect

- Information for Architects for this Nordan Window**
- Data Sheet (PDF)
  - BS EN 14531-1 Standard
  - ISO 22496 Standard
  - EUDR (Osapiens)
  - Digital Product Data (CoBuilder)
  - General Design Details
  - CE Mark Declaration of Performance (DoP)
  - Osapiens EUDR Calculation and Tracking Sheet

# Health and Safety

On Time Delivery

Value for Money



Name Nick  
Role Resident

Name Jack  
Role Service Engineer



Name Paul  
Role Installer

Name Dan  
Role Commissioning Manager



<https://gs1ie.app/gb>

Name Ildikó  
Role Safety Officer



Name Caroline  
Role Goods Receiver Manager



Name Audan  
Role R&D and QA Manufacturing Manager



Name Rachel  
Role LCA Engineer



Name Jane  
Role Architect



Name Raymond  
Role Scheduling Planning Engineer



lia

# Quality Assurance

# Australian Table Grapes

Scan the QR  
code to discover  
the power of  
product  
verification



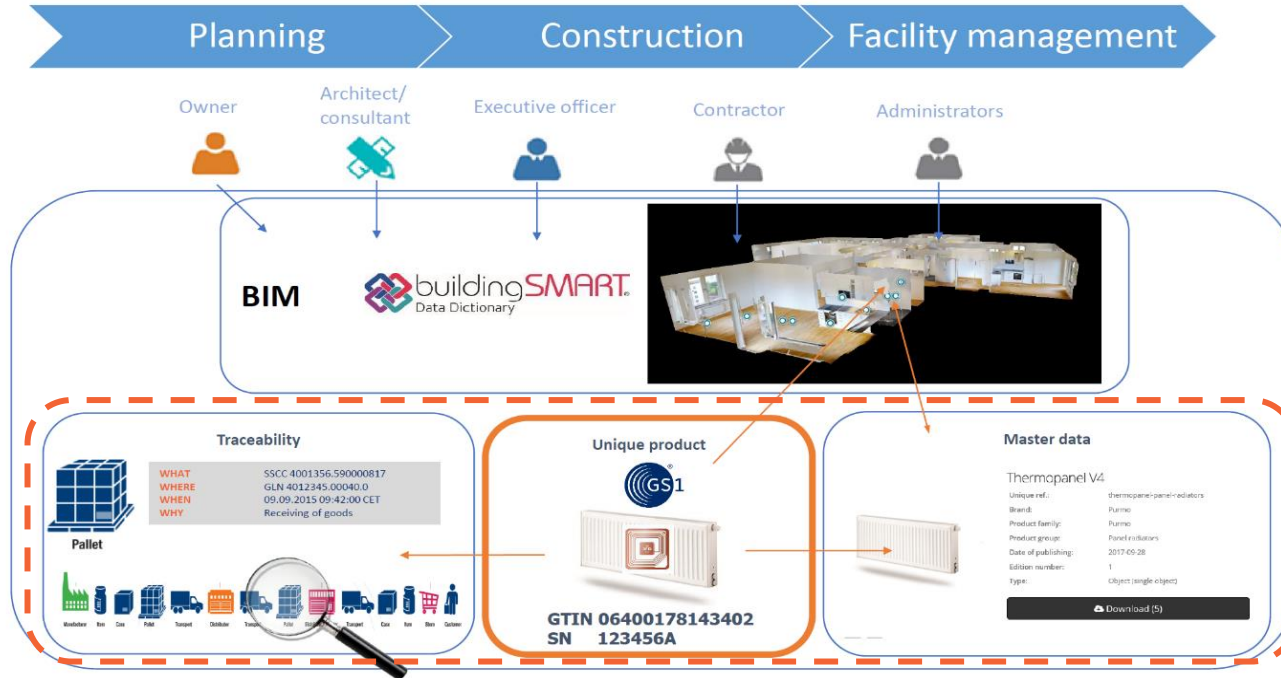
**Australian Government**  
Department of Agriculture,  
Fisheries and Forestry

<https://www.agriculture.gov.au/biosecurity-trade/market-access-trade/national-traceability#:~:text=The%20National%20Traceability%20Framework%20is,Australia'%20in%20our%20international%20markets.>



# Leverage openBIM

## Integration with BIM or other digital engineering frameworks





# Thank you 😊

[Bonnie.ryan@gs1au.org](mailto:Bonnie.ryan@gs1au.org)

*Recommended viewing at your leisure...*

[https://www.youtube.com/watch?v=ZuP5\\_x8CG0M](https://www.youtube.com/watch?v=ZuP5_x8CG0M)